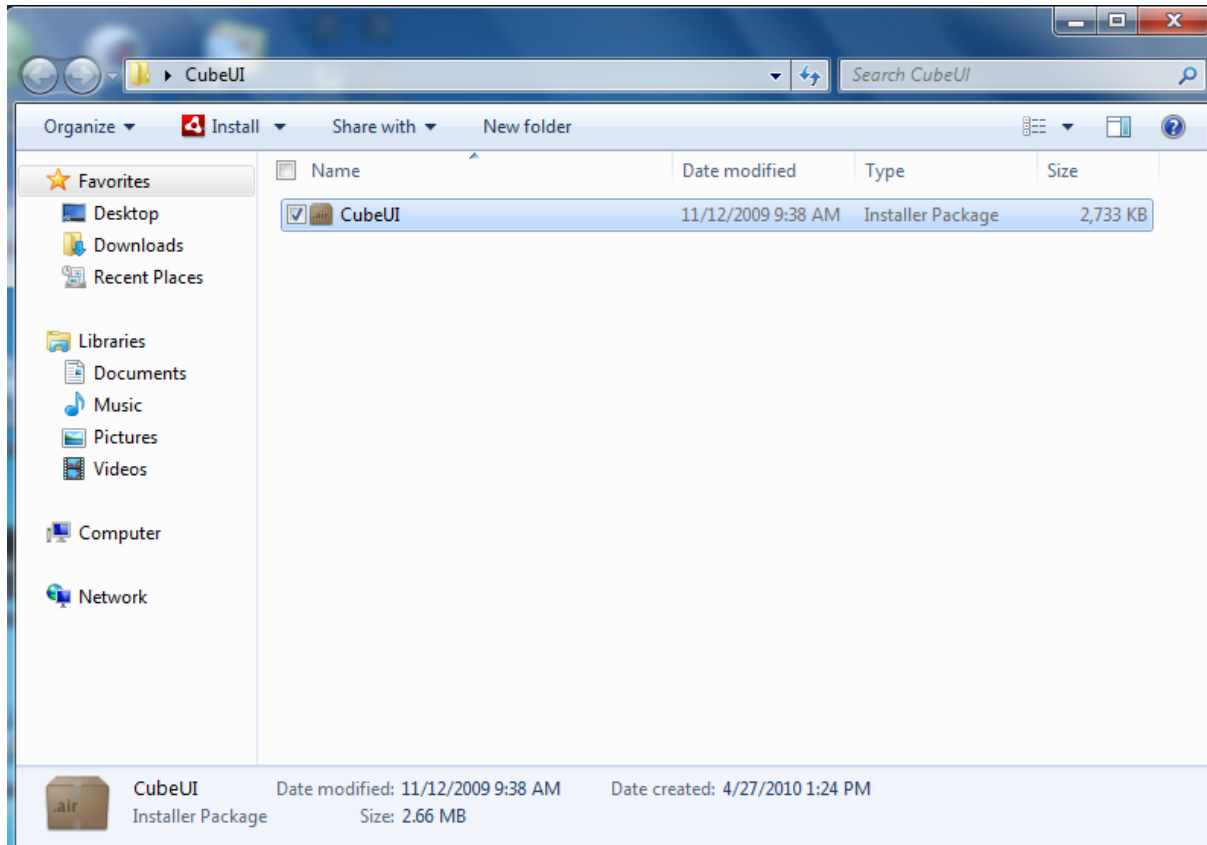


## Viliv Cube (Windows 7)

CubeUI needs to be installed under Win7.

With a double click you can start the installation.



A small black window will open.

Click on „Install“ --> „Continue“ --> „I Agree“

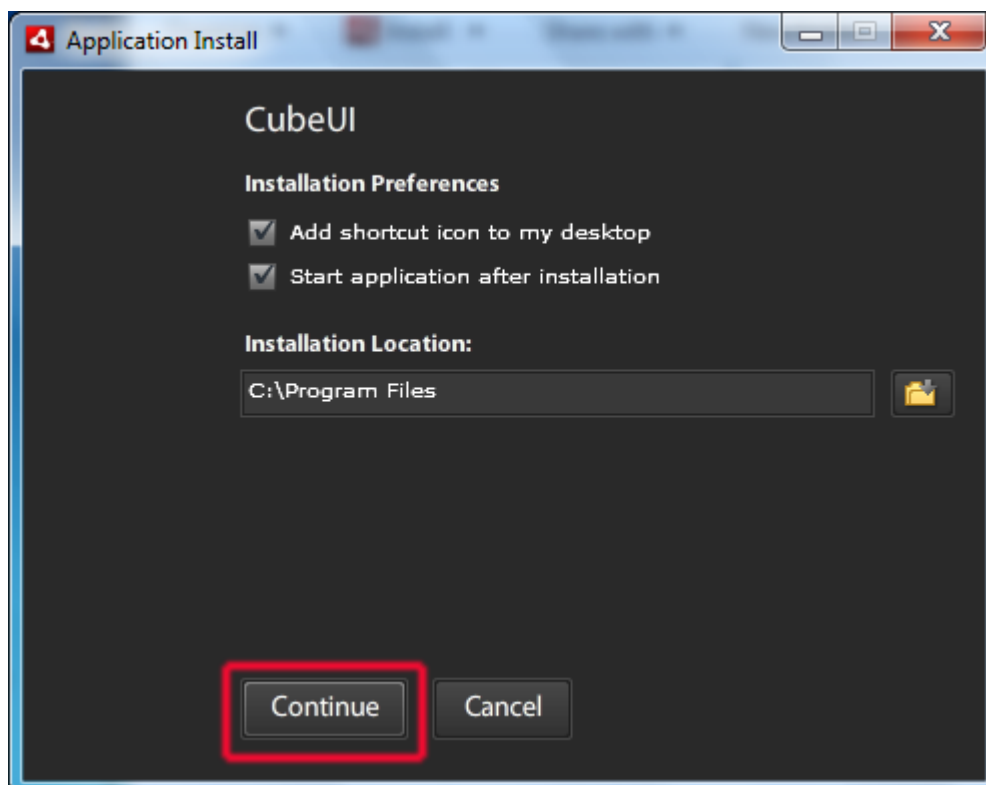
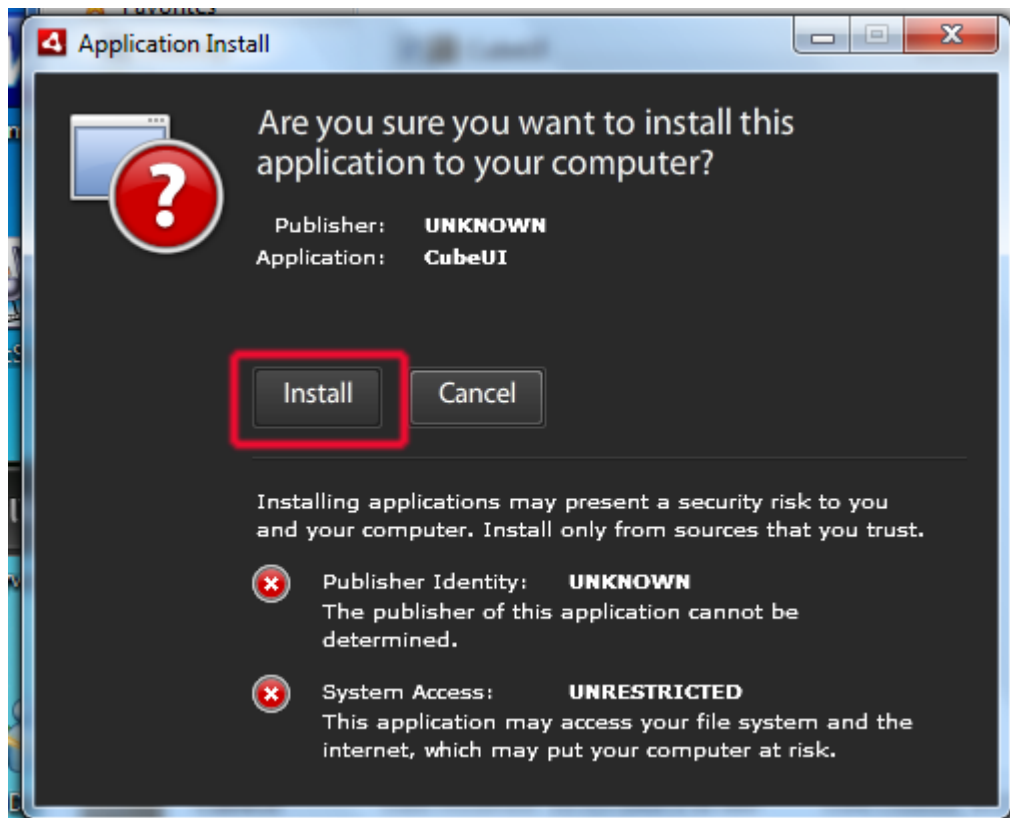
Installation needs approx. 1 minute and the window will close automatically when finished.



**CARTFT.COM**

Shop for mobile  
PC- and GPS-Solutions

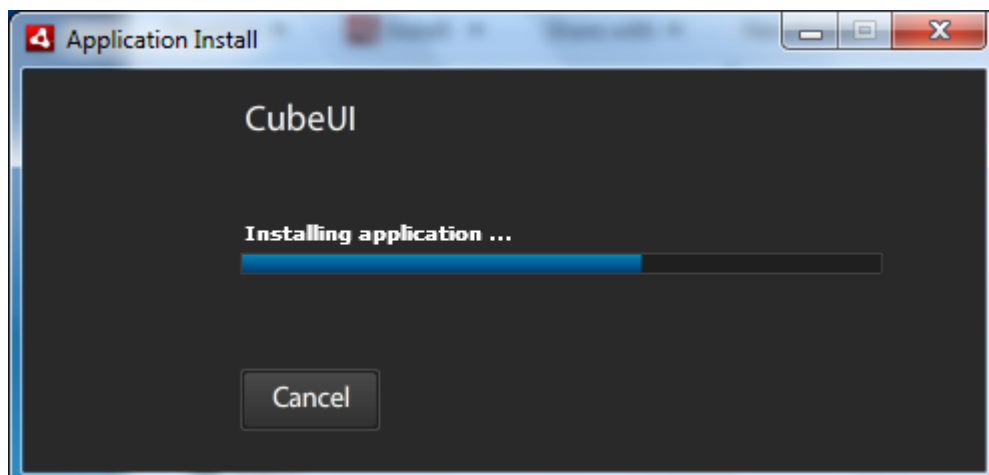
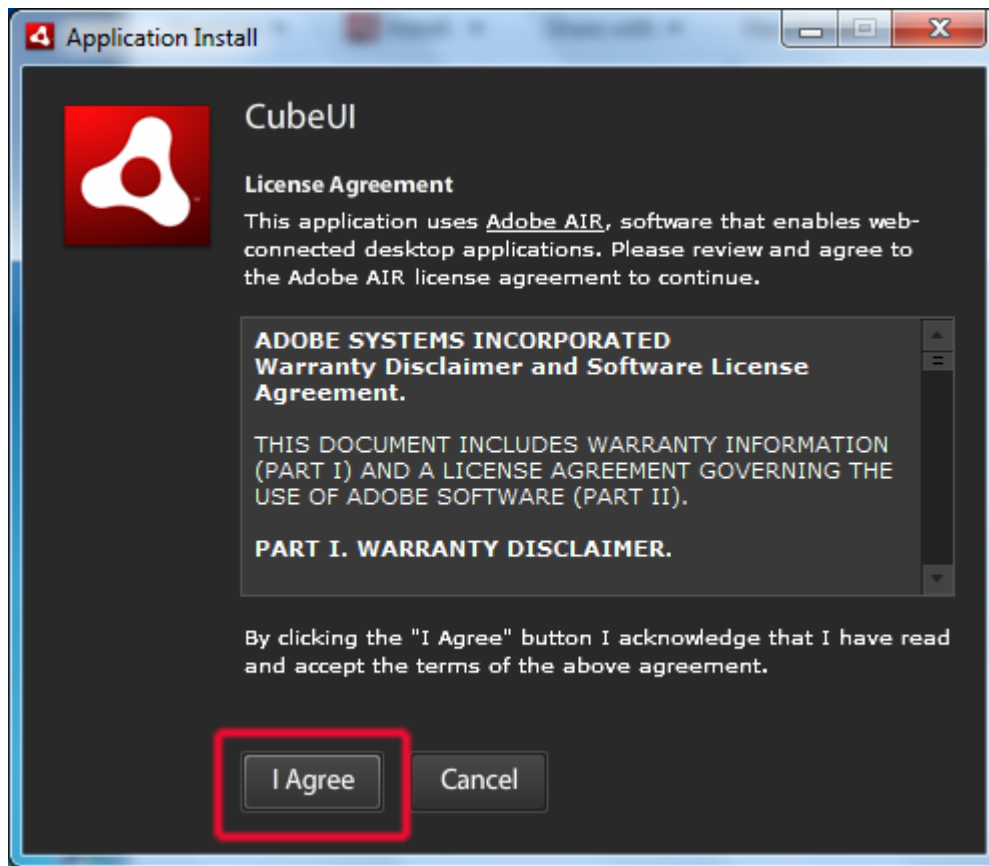
Power Up Your Car





**CARTFT.COM**  
Shop for mobile  
PC- and GPS-Solutions

Power Up Your Car



If you want Cube to be started automatically upon Windows startup :

Double-click on desktop shortcut „Viliv Manager“

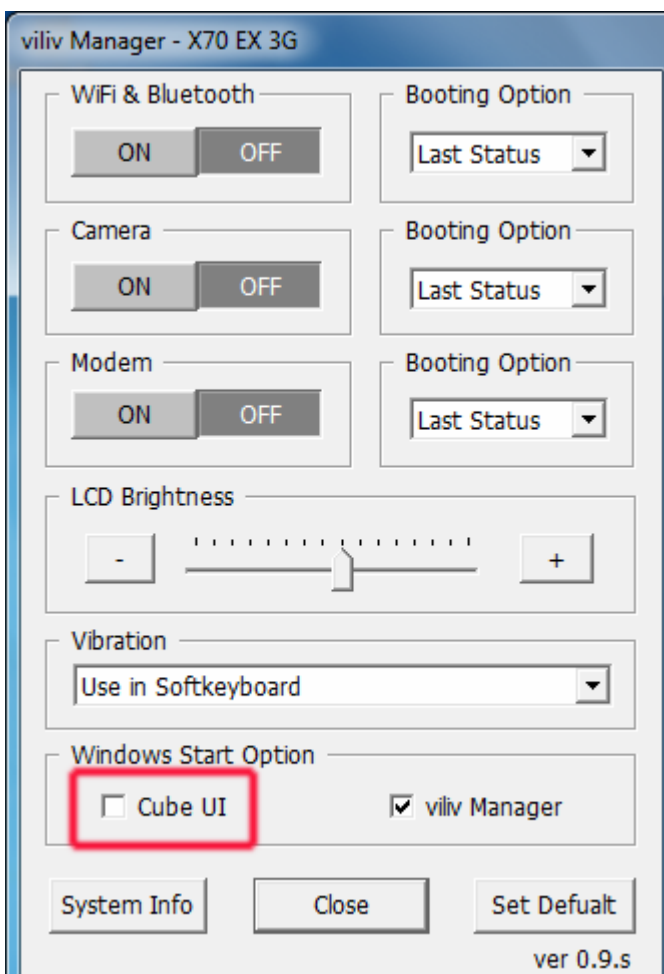


**CARTFT.COM**  
Shop for mobile  
PC- and GPS-Solutions

Power Up Your Car



In „Viliv Manager“ check the option for Cube UI.

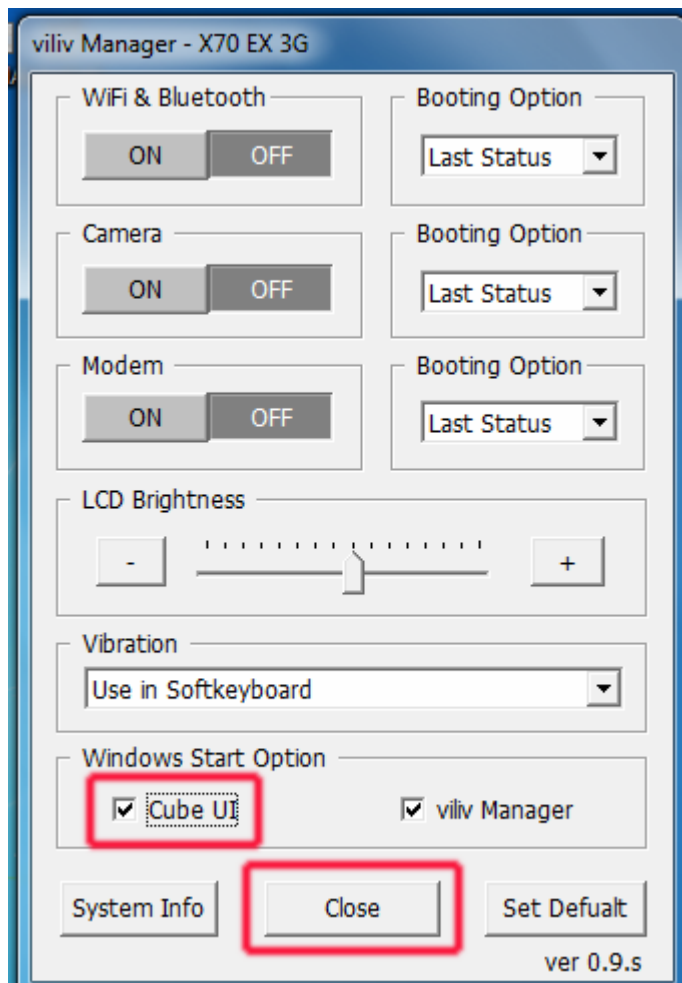


Close the window and restart the system.

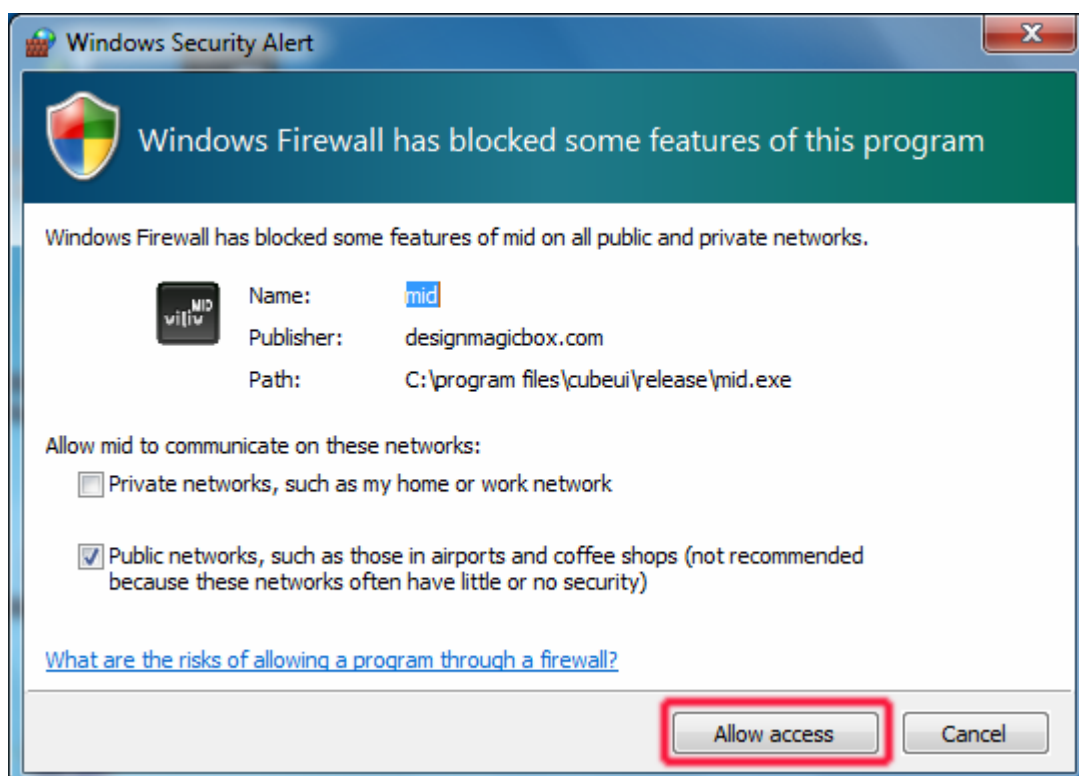


**CARTFT.COM**  
Shop for mobile  
PC- and GPS-Solutions

Power Up Your Car



After booting you need to confirm this message :



Now you can use the Cube utility.



The new shortcut on desktop called „MID“ will open it also.

